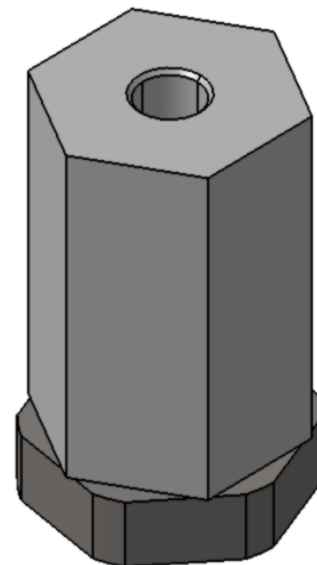


General Characteristics

The HYMANN HY-ARV are check valves to close completely the passage of a flowing fluid in one direction and allow free flow in the opposite.

Technical Specifications

Inlet diameter	1 ½"
Outlet diameter	1 ½"
Sealing flap diameter	100 mm
External dimensions	High: 180 mm ϕ :120 mm
Nominal pressure	16 bar
Range of working temperature	-10 °C - 80 °C
Working fluid	High viscosity fluids
Fluid maximum speed	3 m/s



Material

Valve body	Carbon Steel
Flap	Carbon Steel

